



ROLLESTON



168



3



2.5



2.0



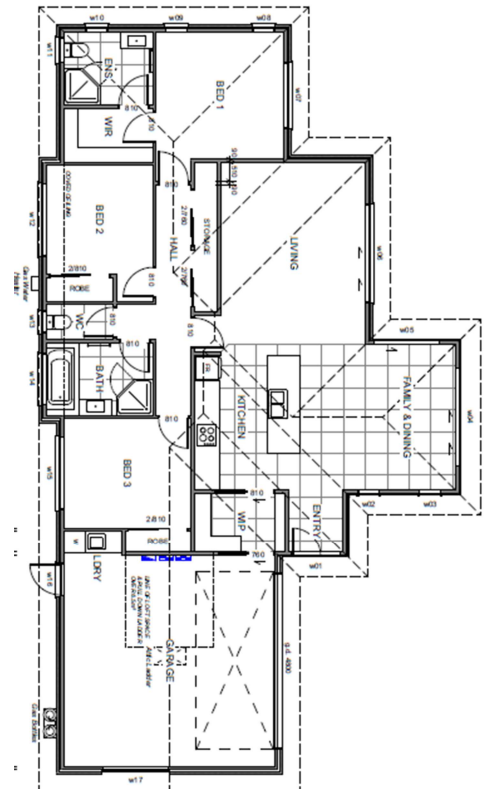
1 LOFT

WHAT MORE COULD YOU WANT

Solid and stylish, this plan allows you to make the most of your site. With open plan living, two living areas, full bathroom and separate toilet. Three generous bedrooms, the master incorporating a walk-in robe and luxurious ensuite. The beautiful family home will feel like home the minute you walk in the door.

FEATURES:

- Fujitsu 8kW heat pump
- Bosch Appliances
- Coloursteel Long Run Roof
- Easy care Brick Exterior
- 10 Year Masterbuild Warranty
- Walk through Pantry
- Mastercraft Kitchen



ABOUT TRENDSETTER

WHY CHOOSE US?

Trendsetter Homes has built a reputation on designing quality homes, value and outstanding workmanship specialising in design and build, and house and land packages all over Christchurch, Kaiapoi, Rangiora and the wider Canterbury region. Our team is made up of over 40 years of experience in creating customer focused quality family homes, so you can be assured that our full design and streamlined build process will meet your expectations and budget.



YOUR NEW HOME ON TIME, ON BUDGET!

Our commitment to you is, finished to the highest standard, the agreed time frame, and at the agreed price. Now that's a commitment!

*Subject to Market & Site Influences
&*Terms & Conditions apply

*Designs and drawings are artist impressions only and subject to change without notice



Are you ready to make your dream home a reality?

BOOK A CONSULTATION TODAY!

*You'll Love
The Difference*

P: Christine - 027 252 0001 | P: Tony - 027 255 0001 | E: info@trendsetterhomes.co.nz
A: Office: 57 The Esplanade, Pegasus, P.O. Box 78100, Pegasus 7648

www.trendsetterhomes.co.nz