



## MOSGIEL



188



3



2.5



2.0



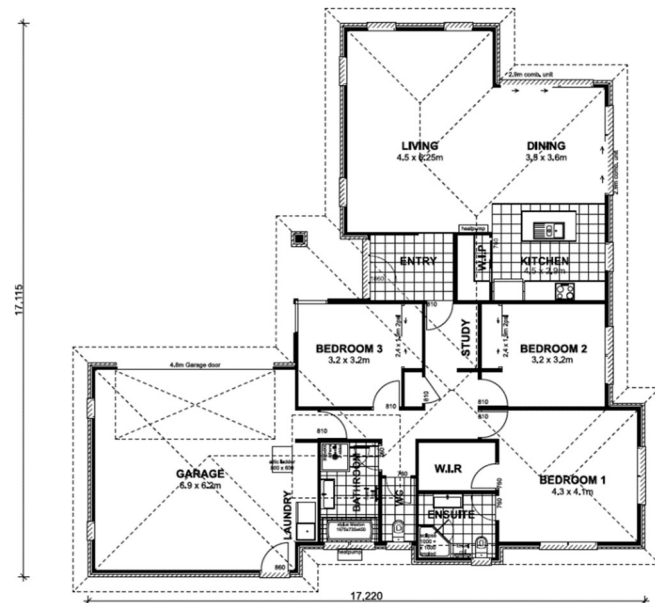
1 LOFT

### GENEROUS PROPORTIONS FOR IDEAL LIVING

An impressive entry to your new home leads you to a beautiful, light filled open plan living space and modern kitchen including a scullery. The living and dining areas capture all day sunshine. The clever layout incorporates a study nook, 3 generous bedrooms, the master with ensuite and walk-in robe. There is internal access via the double garage. This home is a must have for a busy family.

#### FEATURES:

- Fujitsu 8kW heat pump
- Bosch Appliances
- Coloursteel Long Run Roof
- Easy care Brick Exterior
- 10 Year Masterbuild Warranty
- Walk in Pantry
- Mastercraft Kitchen



## ABOUT TRENDSETTER

### WHY CHOOSE US?

Trendsetter Homes has built a reputation on designing quality homes, value and outstanding workmanship specialising in design and build, and house and land packages all over Christchurch, Kaiapoi, Rangiora and the wider Canterbury region. Our team is made up of over 40 years of experience in creating customer focused quality family homes, so you can be assured that our full design and streamlined build process will meet your expectations and budget.



### *YOUR NEW HOME ON TIME, ON BUDGET!*

Our commitment to you is, finished to the highest standard, the agreed time frame, and at the agreed price. Now that's a commitment!

\*Subject to Market & Site Influences  
&\*Terms & Conditions apply

\*Designs and drawings are artist impressions only and subject to change without notice



## Are you ready to make your dream home a reality?

**BOOK A CONSULTATION TODAY!**

*You'll Love  
The Difference*

P: Christine - 027 252 0001 | P: Tony - 027 255 0001 | E: [info@trendsetterhomes.co.nz](mailto:info@trendsetterhomes.co.nz)  
A: Office: 57 The Esplanade, Pegasus, P.O. Box 78100, Pegasus 7648

[www.trendsetterhomes.co.nz](http://www.trendsetterhomes.co.nz)