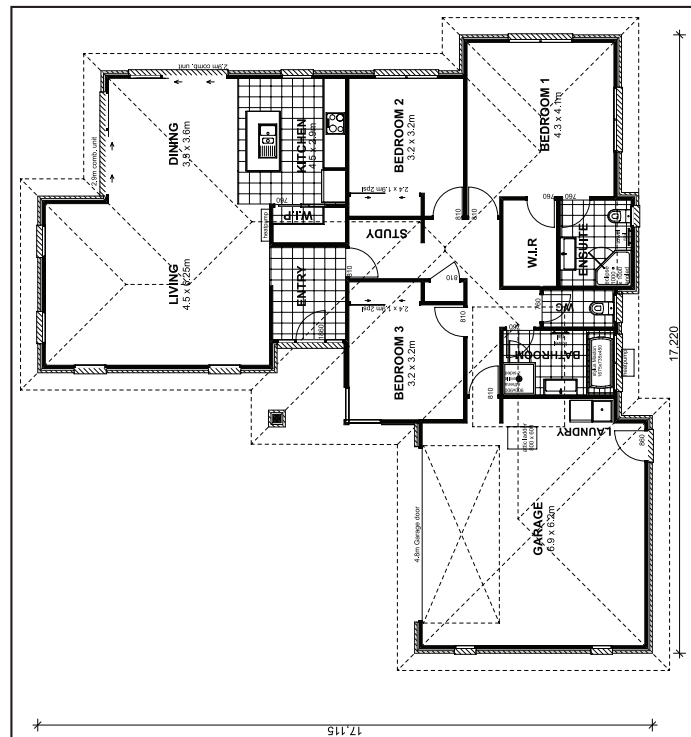




**Generous proportions for ideal living.**

An impressive entry to your new home leads you to a beautiful, light filled open plan living space and modern kitchen including a scullery. The living and dining areas capture all day sunshine. The clever layout incorporates a study nook, 3 generous bedrooms, the master with ensuite and walk-in robe. There is internal access via the double garage. This home is a must have for a busy family.



- House 188m<sup>2</sup> \*
- 10 year Masterbuild warranty
- Attractive easy-care brick exterior
- Long run Coloursteel roof
- Carpets, vinyl and tiles
- Stainless appliances
- Fujitsu heat pump

