

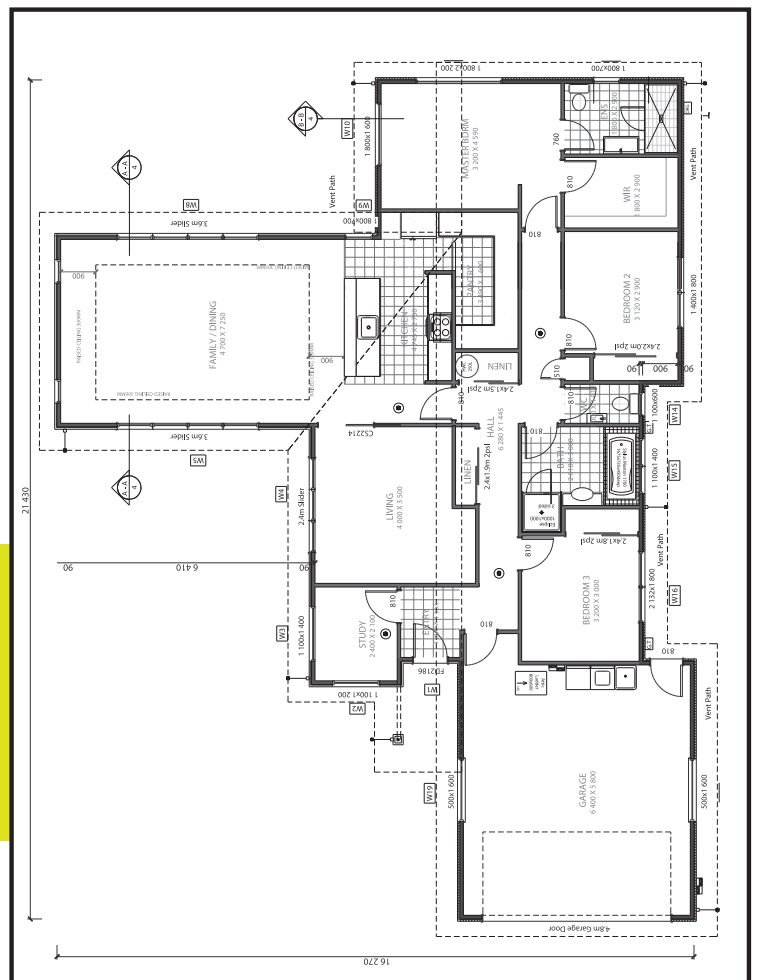


Ultra modern, high spec living

With 3 generous bedrooms, the master with walk in robe and ensuite, 2 separate living areas and separate study, high spec kitchen with granite tops and walk in pantry, this home offers everything you would expect for modern relaxed living. Designed to maximise views over the wetlands, this modern family home offers all you could wish for, and more.

Home highlights

- Designed for a total house floor area of 203m²
- Protected beneath a long run Coloursteel roof
- Appointed with high quality carpets, vinyl and tiles
- Complete with premium fittings and appliances
- Kept cozy with an efficient Fujitsu heat pump
- Secured by a 10 year Masterbuild warranty



CONTACT US

Office : 03 920 1001
 Tony : 027 255 0001
 Christine : 027 252 0001
info@trendsetterhomes.co.nz
www.trendsetterhomes.co.nz

FEATURING

Bringing your home to life

All Trendsetter Homes are specified and built to a high quality standard, ensuring your comfort and enjoyment for years to come. With a wide range of popular home designs, you can either 'stick to the plan' or customise to suit - the choice is yours.

All of our Urban home plans come with the following features and benefits:

The process:

- 10 year Masterbuild warranty for your protection and peace of mind
- Easy to understand NZRMBA plain language contract
- Council Building Consent fees included
- Exterior/Interior Colour Consultation - create a palette you'll love

The build:

- Engineer designed foundation
- Precision cut machined timber framing
- Corrugated colour steel roof & ridging, plus colour steel fascia & gutter system for ultimate protection from the weather

Exterior:

- Plaster and Linea as pictured.
- LED exterior lighting for your security
- 3 exterior hose taps, 1 on each rear wall
- Sectional garage door with auto opener
- Sealed aluminum front entry door with sidelight

Interior finishings:

- Superior 3 coat Resene paint finish throughout
- Quality 13mm Gib board standard to all internal ceilings and 10mm Gib board to all internal walls
- Stylish and whisper-quiet Windsor door handles
- Durable and cozy carpet throughout with commercial 11mm underlay
- Double glazed windows throughout (excluding garage)
- LED interior lighting throughout
- Tiled entry, bathroom, WC and ensuite

Bathroom/laundry:

- Easy-to-clean painted Gib Aqualine to bathroom, ensuite and laundry
- Chromed heated towel rail in bathroom and ensuite
- Contemporary wall mounted vanities
- Tiled flooring to wet areas for practical living
- Large tiled shower to ensuite
- Undertile heating to bathrooms/ensuite

Kitchen:

- Fitted with all the high-spec appliances you love, like:
- Ariston stainless steel oven, gas hobbs, dishwasher & matching hood
- Granite bench tops
- Stainless steel bowl with drainer
- High quality Methven tapware

Amenities:

- Gas hot water cylinder means hot water is always on tap
- 2 telephone outlets keep you connected
- Charge up with HPM electrical plugs & switches including metal face plates
- Fujitsu high wall heat pump/air conditioner for year round comfort

* Floorspace includes loft
Plans all include brick veneer.