

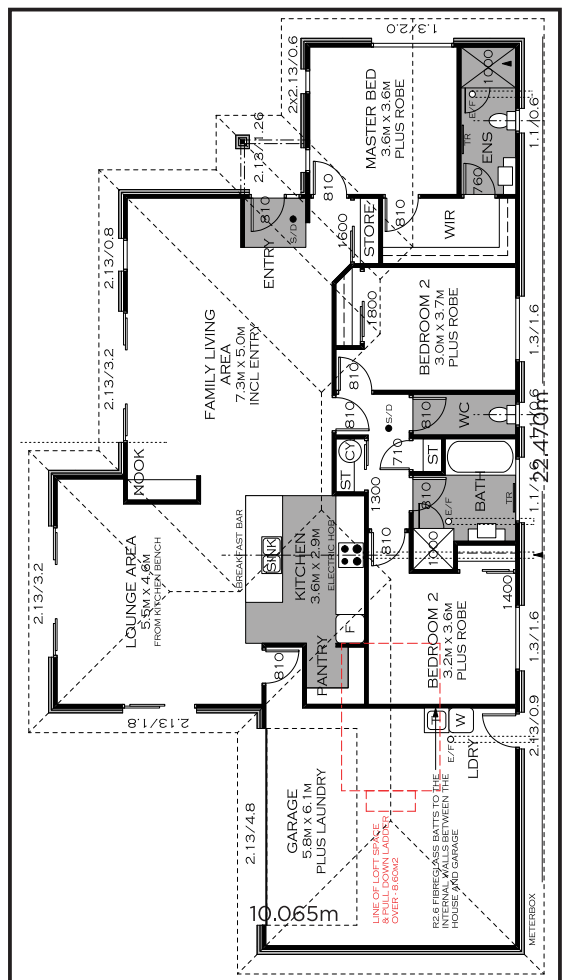


Brand new, and ready now

109 Pegasus Boulevard is available for you now, With 3 generous bedrooms, the master with walk in robe and ensuite, 2 separate living areas and a dining area too, multipurpose off-street parking, large double garage, this home offers everything you would expect for modern relaxed living, designed specifically for the 749m² site to maximise views north, solar gain, outdoor living and a large, landscaped backyard for the kids or entertaining alike.

Home highlights

- Designed for a total house floor area of 203m²
- Protected beneath a long run Coloursteel roof
- Appointed with high quality carpets, vinyl and tiles
- Complete with premium fittings and appliances
- Kept cozy with an efficient Fujitsu heat pump
- Secured by a 10 year Masterbuild warranty



CONTACT US

Office : 03 920 1001
 Tony : 027 255 0001
 Christine : 027 252 0001
info@trendsetterhomes.co.nz
www.trendsetterhomes.co.nz



FEATURING

Bringing your home to life

All Trendsetter Homes are specified and built to a high quality standard, ensuring your comfort and enjoyment for years to come. With a wide range of popular home designs, you can either 'stick to the plan' or customise to suit - the choice is yours.

All of our Urban home plans come with the following features and benefits:

The process:

- 10 year Masterbuild warranty for your protection and peace of mind
- Easy to understand NZRMBA plain language contract
- Council Building Consent fees included
- Exterior/Interior Colour Consultation - create a palette you'll love

The build:

- Engineer designed foundation
- Precision cut machined timber framing
- Corrugated colour steel roof & ridging, plus colour steel fascia & gutter system for ultimate protection from the weather

Exterior:

- Brick veneer and Linea as pictured.
- LED exterior lighting for your security
- 3 exterior hose taps, 1 on each rear wall
- Sectional garage door with auto opener
- Sealed aluminum front entry door with sidelight

Interior finishings:

- Superior 3 coat Resene paint finish throughout
- Quality 13mm Gib board standard to all internal ceilings and 10mm Gib board to all internal walls
- Stylish and whisper-quiet Windsor door handles
- Durable and cozy carpet throughout with commercial 11mm underlay
- Double glazed windows throughout (excluding garage)
- LED interior lighting throughout
- Tiled entry, bathroom, WC and ensuite

Bathroom/laundry:

- Easy-to-clean painted Gib Aqualine to bathroom, ensuite and laundry
- Chromed heated towel rail in bathroom and ensuite
- Contemporary wall mounted vanities
- Tiled flooring to wet areas for practical living
- Large tiled shower to ensuite
- Undertile heating to bathrooms/ensuite

Kitchen:

- Fitted with all the high-spec appliances you love, like:
- Ariston stainless steel oven, ceramic hob, dishwasher & matching hood
- 38mm bench tops
- Stainless steel bowl with drainer
- High quality Methven tapware

Amenities:

- Mains 300 litre hot water cylinder means hot water is always on tap
- 2 telephone outlets keep you connected
- Charge up with HPM electrical plugs & switches including metal face plates
- Fujitsu high wall heat pump/air conditioner for year round comfort

* Floorspace includes loft
Plans all include brick veneer.