

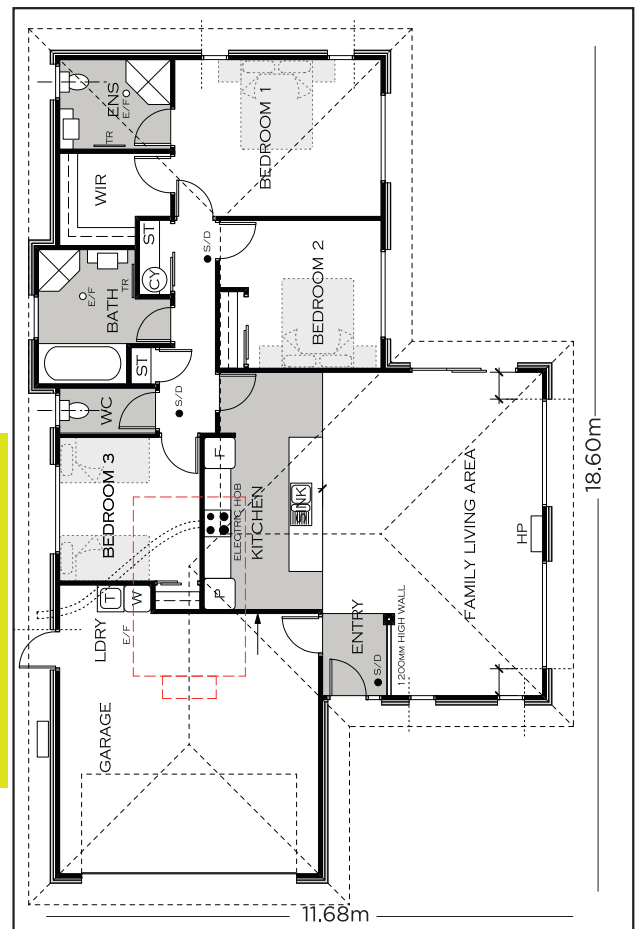


Balanced living for the whole family.

The Wellsford has been designed to effortlessly cater for the needs of a growing family. This welcoming home features a free-flow central living area where the family can gather to cook, dine and socialise. Three bedrooms, two baths and plenty of storage in every room ensures that everyone has their own sense of personal space too.

Home highlights

- 10 year Masterbuild warranty
- Attractive, easy-care clay brick exterior
- Weathertight long run Coloursteel roof
- Your choice of carpets, vinyl and tiles
- On-trend, modern stainless steel appliances
- Fujitsu heat pump for energy efficient comfort
- House total floor area 159m²*



CONTACT US ►

Office : 03 920 1001
 Tony : 027 255 0001
 Christine : 027 252 0001
info@trendsetterhomes.co.nz
www.trendsetterhomes.co.nz

FEATURING



Bringing your home to life

All Trendsetter Homes are specified and built to a high quality standard, ensuring your comfort and enjoyment for years to come. With a wide range of popular home designs, you can either 'stick to the plan' or customise to suit - the choice is yours.

Our base home plans come with the following features and benefits:

The process:

- 10 year Masterbuild warranty for your protection and peace of mind
- Easy to understand NZRMBA plain language contract
- Council Building Consent fees
- Exterior/Interior Colour Consultation
- create a palette you'll love

The build:

- Engineer designed foundation and machined timber framing for strength you can count on
- Corrugated colour steel roof & ridging, plus colour steel fascia & gutter system for ultimate protection from the weather

Exterior:

- Attractive and durable Midland clay brick veneer
- LED exterior lighting for your security
- 3 exterior hose taps
- Sectional garage door with auto opener & 2 remotes
- Sealed aluminum front entry door with sidelight

Interior finishings:

- Superior 3 coat Resene paint finish throughout
- Quality standard 13mm Gib board to all internal ceilings and 10mm Gib board to all internal walls
- Stylish and whisper-quiet Windsor door handles
- Durable and cozy carpet throughout
- Double glazed windows throughout (excluding garage)
- Energy efficient LED interior lighting
- Tiled entry hallway

Bathroom/laundry:

- Attractive Gib Aqualine to bathroom ensuite and laundry
- Chromed heated ladder towel rail
- Contemporary wall mounted vanities
- Vinyl flooring to wet areas for practical living

Kitchen:

- Ariston stainless steel oven, ceramic hob and dishwasher bring you the best of form and function
- High-spec fittings including 38mm bench tops, s/s bowl with drainer and high quality tapware

Amenities:

- Mains 300 litre hot water cylinder means hot water is always on tap
- 2 telephone outlets keep you connected
- Charge up with HPM electrical plugs & switches including metal face plates
- Fujitsu high wall heat pump/air conditioner for year round comfort

* Floorspace includes loft.
Plans all include brick veneer.