



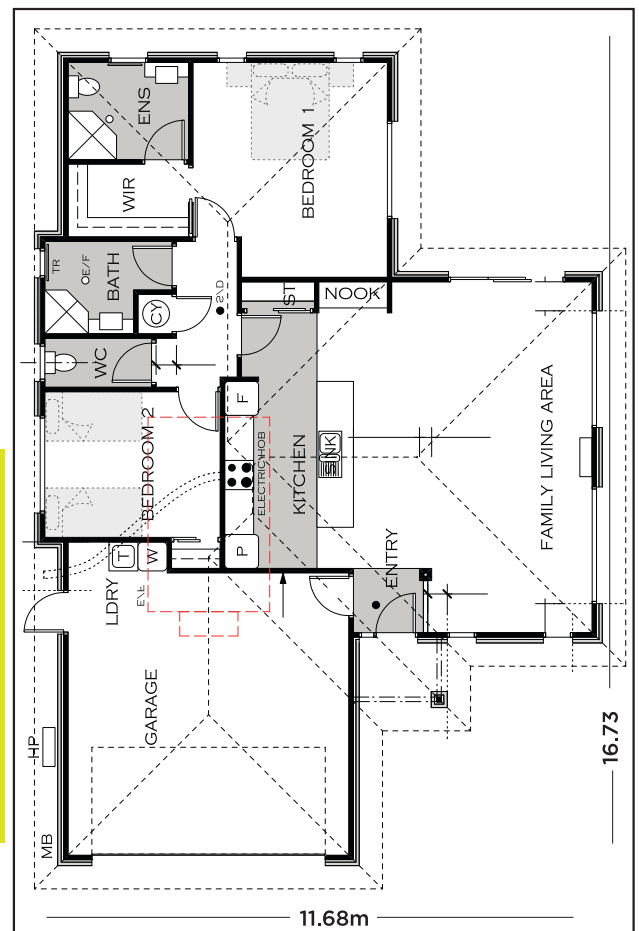
OREWA

Spacious, light-filled living at a very attractive price.

The Orewa has been designed to create the feel of a larger home for those requiring just two bedrooms. At its heart, a well-appointed kitchen flows into the open plan, naturally-lit living space, - an entertainers dream. When it's time to retreat, two private bedrooms await, the master with its own ensuite and large walk-in wardrobe.

Home highlights

- 10 year Masterbuild warranty
- Attractive, easy-care clay brick exterior
- Weathertight long run Coloursteel roof
- Your choice of carpets, vinyl and tiles
- On-trend, modern stainless steel appliances
- Fujitsu heat pump for energy efficient comfort
- House total floor area 159m2*



CONTACT US ▶

Office : 03 920 1001
 Tony : 027 255 0001
 Christine : 027 252 0001
info@trendsetterhomes.co.nz
www.trendsetterhomes.co.nz



FEATURING

Bringing your home to life

All Trendsetter Homes are specified and built to a high quality standard, ensuring your comfort and enjoyment for years to come. With a wide range of popular home designs, you can either 'stick to the plan' or customise to suit - the choice is yours.

Our base home plans come with the following features and benefits:

The process:

- 10 year Masterbuild warranty for your protection and peace of mind
- Easy to understand NZRMBA plain language contract
- Council Building Consent fees
- Exterior/Interior Colour Consultation
 - create a palette you'll love

The build:

- Engineer designed foundation and machined timber framing for strength you can count on
- Corrugated colour steel roof & ridging, plus colour steel fascia & gutter system for ultimate protection from the weather

Exterior:

- Attractive and durable Midland clay brick veneer
- LED exterior lighting for your security
- 3 exterior hose taps
- Sectional garage door with auto opener & 2 remotes
- Sealed aluminum front entry door with sidelight

Interior finishings:

- Superior 3 coat Resene paint finish throughout
- Quality standard 13mm Gib board to all internal ceilings and 10mm Gib board to all internal walls
- Stylish and whisper-quiet Windsor door handles
- Durable and cozy carpet throughout
- Double glazed windows throughout (excluding garage)
- Energy efficient LED interior lighting
- Tiled entry hallway

Bathroom/laundry:

- Attractive Gib Aqualine to bathroom ensuite and laundry
- Chromed heated ladder towel rail
- Contemporary wall mounted vanities
- Vinyl flooring to wet areas for practical living

Kitchen:

- Ariston stainless steel oven, ceramic hobb and dishwasher bring you the best of form and function
- High-spec fittings including 38mm bench tops, s/s bowl with drainer and high quality tapware

Amenities:

- Mains 250 litre hot water cylinder means hot water is always on tap
- 2 telephone outlets keep you connected
- Charge up with HPM electrical plugs & switches including metal face plates
- Fujitsu high wall heat pump/air conditioner for year round comfort

* Floorspace includes loft
Plans all include brick veneer.